

Prenton, St. Stephen; server & lavatories, proposals, Sept '23 DWG<sup>no</sup> 7090.3.12

GRAHAM  
HOLLAND  
ASSOCIATES

Architects & Historic Buildings Consultants

Winnington Hall, Cheshire, CW8 4DU

tel: 01606 624626

mobile: 07885 224256

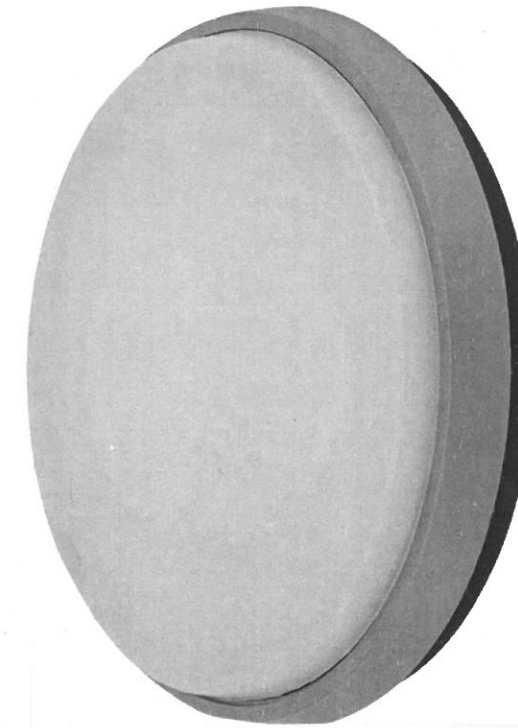
Plas Draw, Ruthin, Denbighshire LL15 1RT

tel: 01824 704709

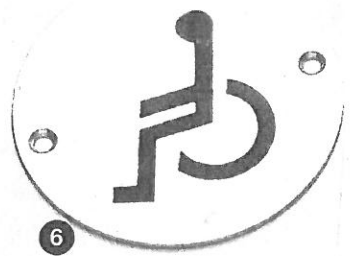
email: info@grahamhollandassociates.co.uk



Self-closing Non-concussive basin taps  
chromed brass by Memus Bristol, ref VANC 1/2 C



Sensor controlled 'opalescent acrylic/aluminum  
disk' wall-light 240 mm dia x 45 mm  
20w, 2000LM. output. by Memus 'Domus' or similar  
to double as alarm controlled 'emergency light'  
code ref Disc-240-SLR



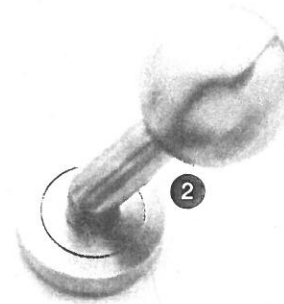
6  
access lav  
lav. door signs



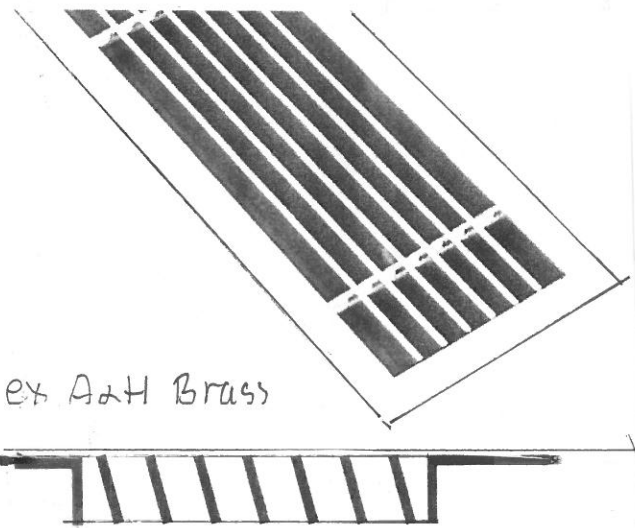
10  
both lav's



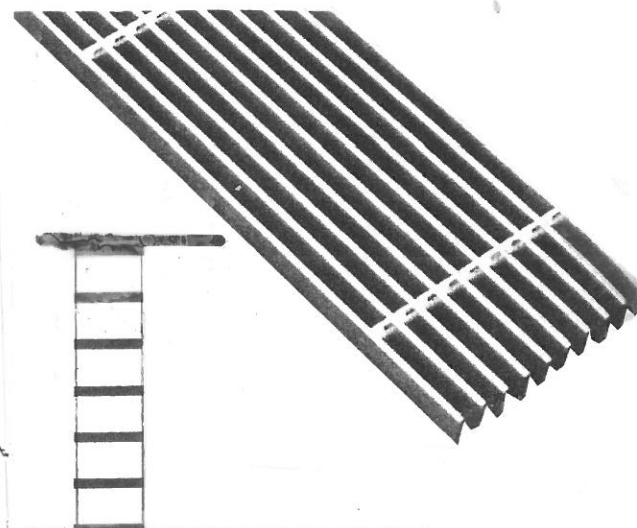
12  
access lav.



2  
Door hooks lavatories



ex A2H Brass



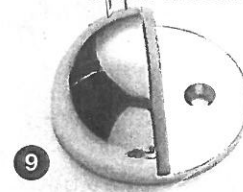
framed grille 19x3 mm vanes  
set at 15° deflection, 10 mm apart.  
to boxing tops

unframed grille 19x3 vanes  
set 10 mm apart; for plinths

Ironmongery illustrations



1  
door handles plus coin-  
operated bolt. externally



9  
door stop

to be in satin st. st. or chromium finish noted\*



towel rails for lavatories \*